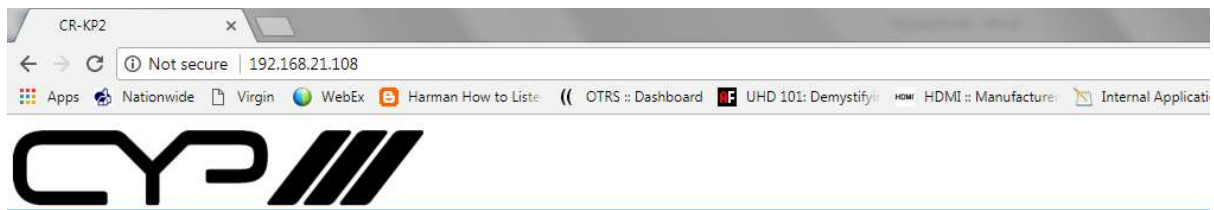
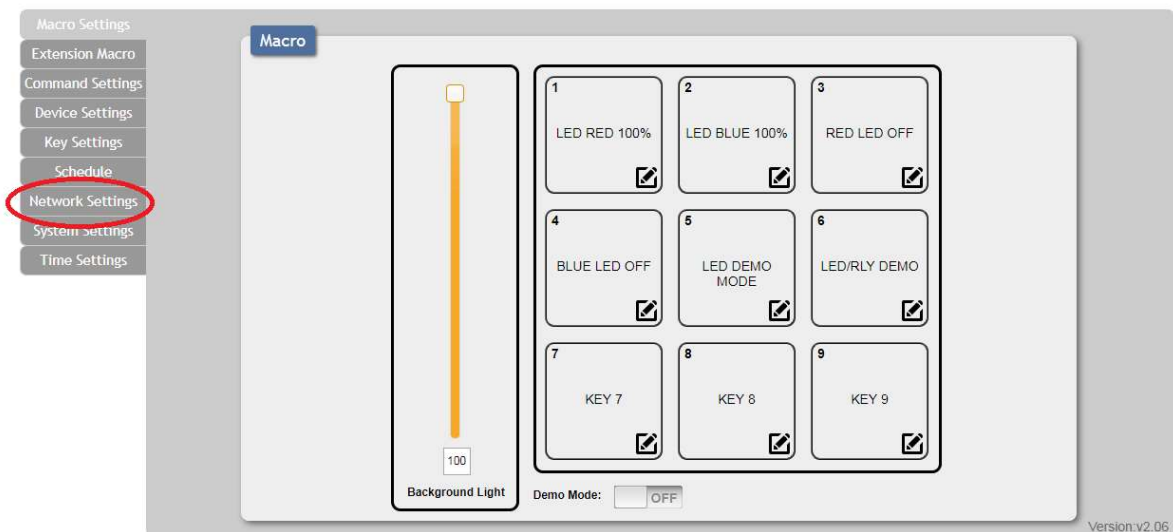


# CR-KP Series Basic Setup

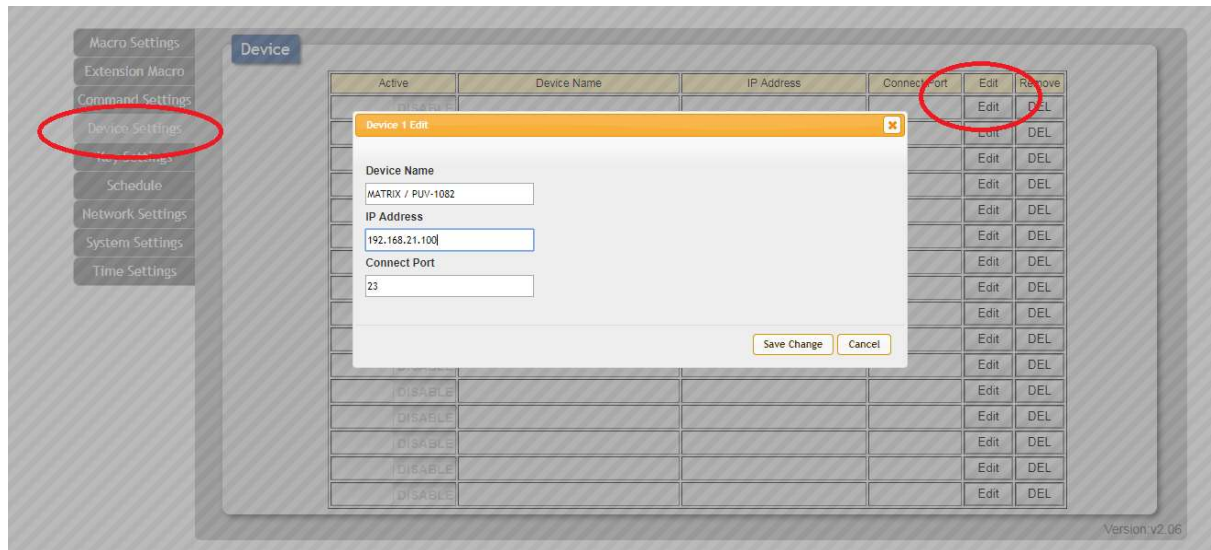
1. Connect the CR-KP series device to a functioning network
2. The unit will automatically power on if the network is POE enabled or power the unit with the provided PSU and phoenix connector.
3. Using an IP finder tool locate the IP address allocated to the CR-KP device
4. Enter this IP address on a browser using a computer connected to the same network as the CR-KP device.
5. The CR-KP Device web browser should now be accessed by inputting:
  - **Username** – Admin
  - **Password** – Admin



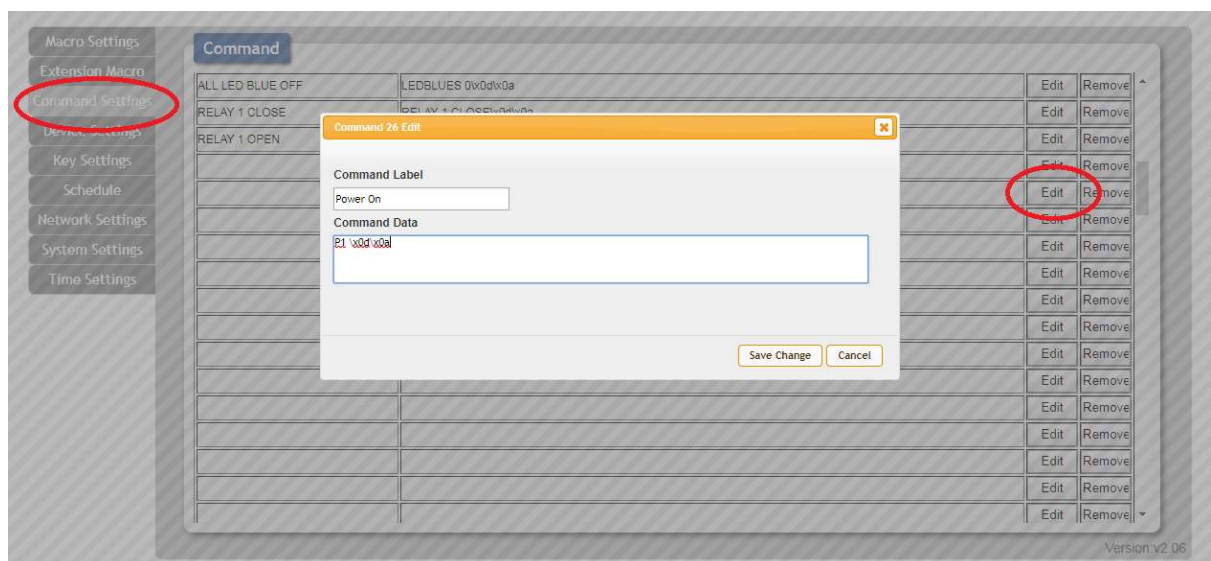
6. From this screen you'll see a number of options, select Network settings where you can administrate a Static IP address that suits your installation or work with DHCP.



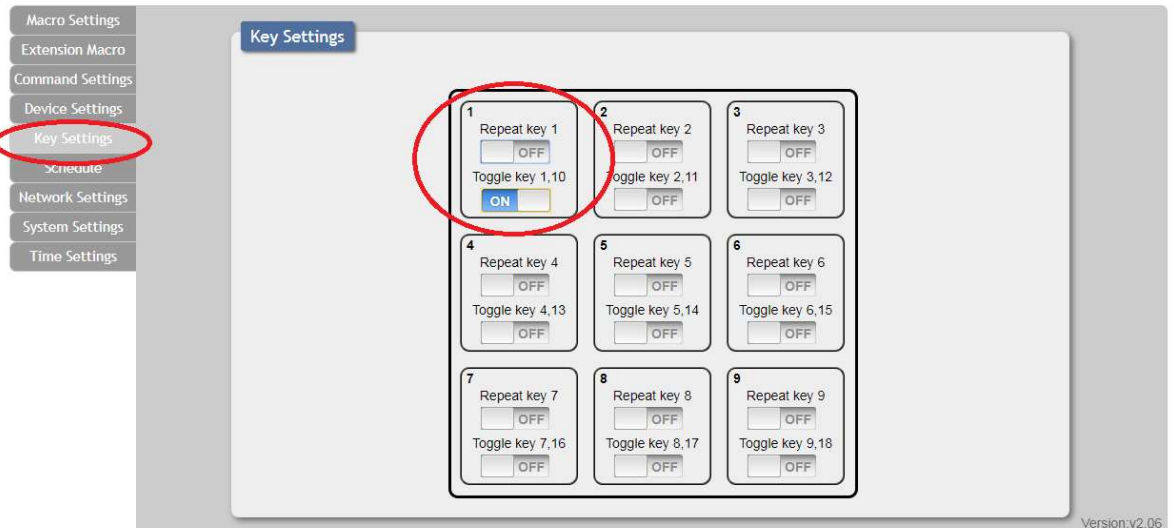
- Head to the device Settings option, select EDIT and create a master device, ie a matrix or presentation switch.



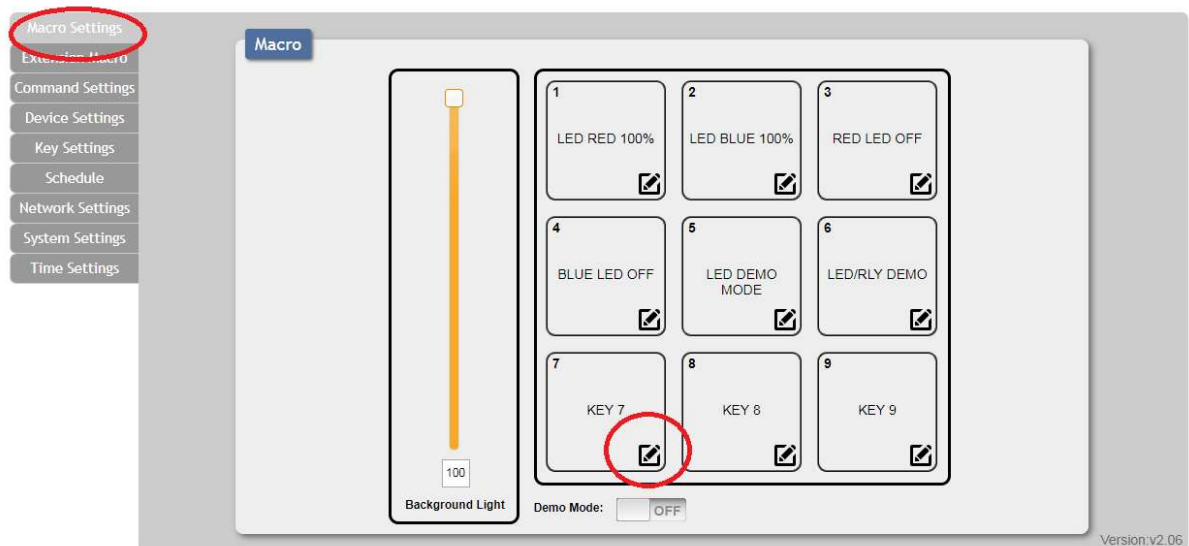
- Select Command Setting and EDIT a free row, this is where you enter any available code (review your devices manual) to control devices on the same network. Please note that the CR/LF code needs to be input for the string to function as expected '\x0d\x0a'.



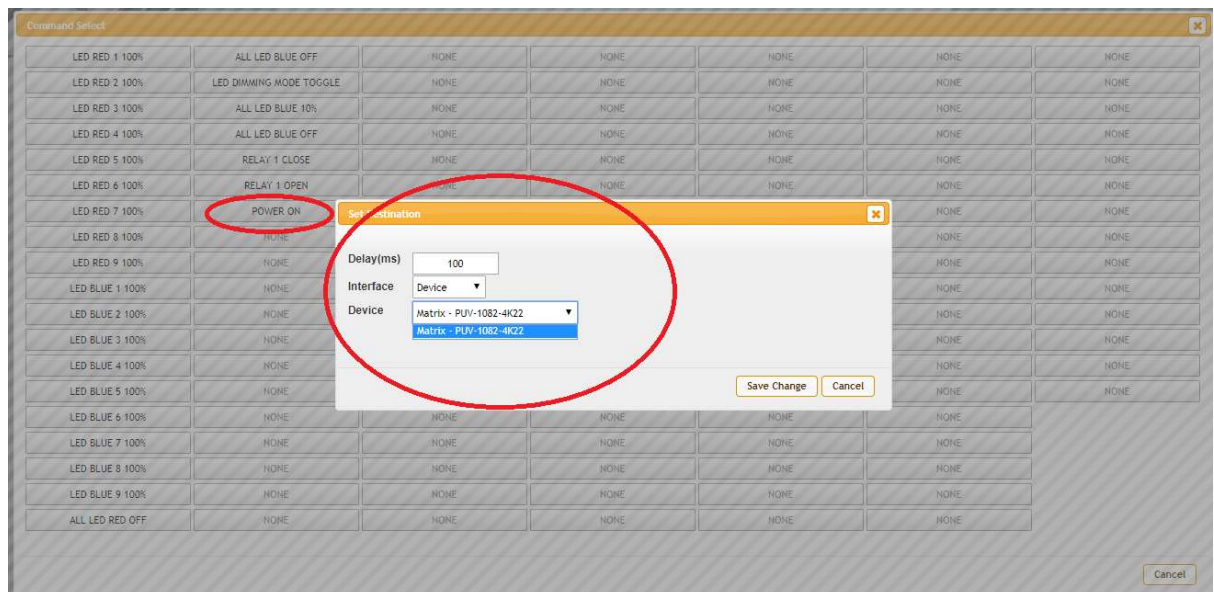
9. Now head to the Key settings option and choose the behaviour of the CR-KP series buttons.
  - a. Standard Function; for example press once and the same command is sent
  - b. Repeat Function; where the command is repeated
  - c. Toggle Function; where two commands such as 'Power On' and Power Off' don't need two separate buttons so when the 'Power On' command is sent the behaviour of the button will move to the second layer of the device and now be able to send, for example; a 'Power Off' command without using an extra button.



10. Now head back to the Macro Settings menu and select the 'Pen Edit' icon where your programmed commands can now be applied to the buttons of your choosing.

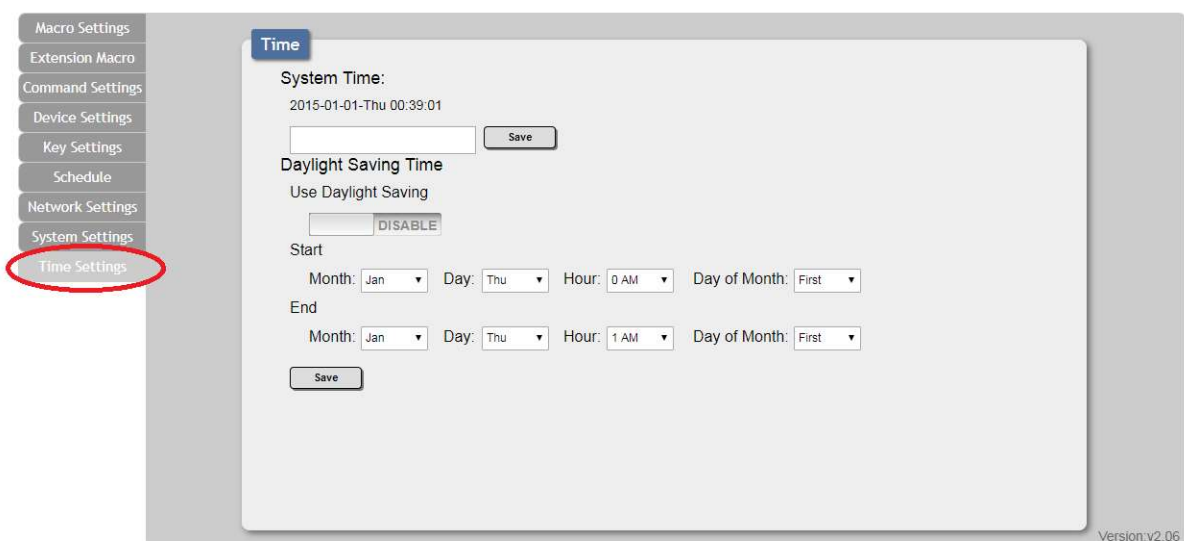


11. From this menu select your programmed commands, create strings that can change the LEDS on the CR unit, the interface you wish for it to control, for this instance select Device and the previously input Matrix in step 7 and if the command is unresponsive or erratic tune the delay settings (default 100ms should be good). Remember to SAVE every step!



12. If you decided to create a toggle behaviour head to the 'EXTENTION MACRO' settings and enter the alternative command following steps 8 to 11 onwards.

13. Now head to the Time Settings where you can setup daylight savings and format system times.



14. Now the last and most important step! Saving your configuration and knowing how to update the unit if and when.

The screenshot shows a web interface for system settings. On the left is a sidebar menu with the following items: Macro Settings, Extension Macro, Command Settings, Device Settings, Key Settings, Schedule, Network Settings, System Settings (highlighted with a red circle), and Time Settings. The main content area is titled 'System' and contains several sections: 'Web User Setting' with fields for Username, Old Password, New Password, and Confirm Password, followed by a 'Save' button; 'Web Login Timeout(Minute)' with a dropdown menu set to '5 min'; 'Download Current Configuration' with a 'Download' button (circled in red); 'Restore Configuration' with a 'Choose File' button, the text 'No file chosen', and a 'Restore' button; 'Reset to Default' with an 'ALL Reset' button; 'Reboot the Unit' with a 'REBOOT' button; and 'Firmware Upgrade' with a 'Choose File' button, the text 'No file chosen', and an 'Upgrade' button (circled in red). A red circle also highlights the 'Download Current Configuration' section header. The bottom right corner of the interface displays 'Version: v2.06'.