

QD1 Data Enclosure

- 18U, 22U, 27U, 37U, 42U & 47U in heights
- 600 x 600mm
- 19" Adjustable front & rear vertical profiles (2.0mm thickness)
- Lockable front glass (tempered safety glass) door with air vents
- Lockable solid steel rear door
- Doors can be hinged on left or right
- Lockable & removable side panels
- All-round ventilation for increased airflow
- Multiple cable entry on the top & base of the cabinet (with removable glands)
- Transport castors & jacking feet fitted
- Cage nuts supplied (bag of 50)
- All-round earth bonding
- Up to 800kg static load capacity
- Powdered coated finish – RAL9004 (Black)



The QD1 Data Enclosure is a range of 19" floor standing Data Cabinets that have been developed to suit most of today's network infrastructure installations. It is the perfect solution for all common applications such as LAN installations, server room's, hardware, AV and security housing.

Available in six heights which include 18U, 22U, 27U, 37U, 42U and 47U.

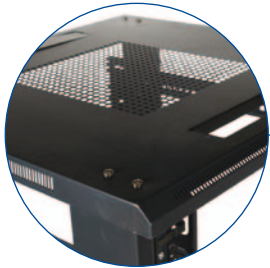
The range of QD1 Enclosures has been carefully designed to produce an exquisite and aesthetically pleasing enclosure. Not only have we produced a strong and light weight enclosure, we have also incorporated many useful

features which make the QD1 Enclosure unique. These include printed U markers on all four vertical panel mounts, integrally fitted vertical cable management jumper ring and removable cover (800mm wide units only).

As standard all QD1 enclosures come supplied with a toughened glass front door with a quick release handle and a lockable steel rear door. Both doors can be easily removed and hinged from either side of the enclosure. Both removable side panels can also be locked for additional security. Every enclosure comes with two sets of adjustable panel mounting profiles and a set of travel castors and jacking feet all ready fitted.

To complement the enclosures we also have a complete range of accessories such as roof fan trays, shelves, PDU's, plinths and various cable management equipment.

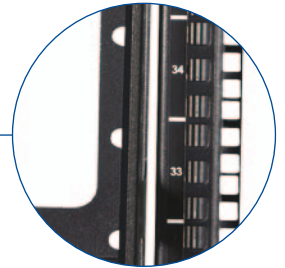
Qube Enclosure Features



Multiple Top Cable Entry



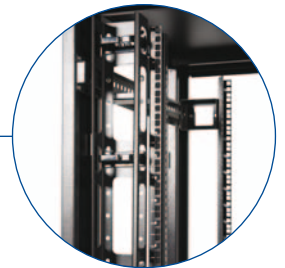
Roof Mount Fan
tray fits into the roof void



Printed Numbered U Strips
on all 4 verticals



Quick Release
Hinge System



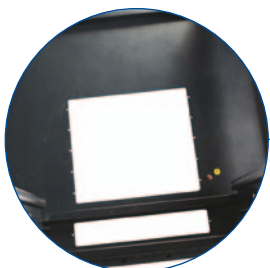
Fitted Vertical Jumper Rings &
Top Cover on 800mm Wide Units



4 X Fully Adjustable
19" Verticals



Slam Latch Door Lock



Multiple Base Cable Entry



Jacking Feet & Travel
Castors fitted



QD1 Data Enclosure Part Numbers

P/N	600mm Wide Data Cabinets		Height inc Castors	Weight
WB-2518	18U 600 x 600 Data Cabinet - Glass Front, Steel Rear	QU1866	988mm	58kg
WB-2522	22U 600 x 600 Data Cabinet - Glass Front, Steel Rear	QU2266	1166mm	62kg
WB-2527	27U 600 x 600 Data Cabinet - Glass Front, Steel Rear	QU2766	1389mm	66kg
WB-2537	37U 600 X 600 Data Cabinet - Glass Front, Steel Rear	QU3766	1834mm	76kg
WB-2542	42U 600 X 600 Data Cabinet - Glass Front, Steel Rear	QU4266	2056mm	82kg
WB-2547	47U 600 X 600 Data Cabinet - Glass Front, Steel Rear	QU4766	2278mm	88kg

Packaging & Delivery

To ensure that every enclosure is delivered to site undamaged we take every precaution possible to keep each unit protected during transit. Upon being built, every enclosure is shrink wrapped and placed into a padded cardboard container, before being palletized and strapped to limit any damage to doors, corners and side panels.

